



137th Stated Meeting
of the Presbytery of Arkansas
Friday and Saturday, February 9-10, 2018
Lyon College
Batesville, Arkansas

HOST INFORMATION



W. JOSEPH KING, Ph.D.
PRESIDENT

January 9, 2018

Commission of the Arkansas Presbytery

Dear Colleagues:

Greetings from Lyon College. We extend warm wishes and offer our hospitality on the occasion of the February 2018 meeting of the Presbytery of Arkansas. We look forward to your arrival and to renewing friendships and making new acquaintances.

Lyon College is committed to our Presbyterian heritage and appreciates the ongoing support we have received from individual Presbyterians, as well as churches and the Presbytery, since our founding more than 140 years ago. Thanks in great measure to that generous support, we have been recognized by national publications such as *US News and World Report* as one of the country's finest liberal arts colleges.

Our students come first at Lyon and are young men and women of character, talent and promise. We are blessed with an exceptionally strong faculty as well. Remarkably, Lyon teachers earned the Arkansas Professor of the Year Award 14 times in the final 24 years it was awarded. This prestigious award was given annually to one and only one professor per state by the Council for the Advancement of Teaching. The award was discontinued in 2016, but ours is a record unmatched by any other liberal arts college in the country.

Life beyond the classroom complements academic life. In particular, our honor system and residential house system offer daily lessons in integrity and responsibility. Similarly, our endowed campus ministry program, led by the Reverend Margaret Alsop, our campus chaplain, offers abundant opportunities for spiritual growth.

Materials in support of your meeting are enclosed. Should you have questions or special needs, please contact Cindy Qualls at 870-307-7211 or cindy.qualls@lyon.edu. We look forward to hosting you.

Sincerely,

A handwritten signature in blue ink that reads "W. Joseph King".

W. Joseph King
President

Presbytery of Arkansas Information for Presbytery Meeting February 9-10, 2018

Lyon College is pleased to be hosting the 2018 Presbytery of Arkansas meeting on Friday and Saturday, February 9-10, 2018. The following information is included to help you plan your trip and familiarize you with the campus. Please also refer to separate pages concerning lodging, dining, child-care, and the campus map.

Campus Phone Numbers:

Lyon College Security: (870) 307-SAFE (7233)

College Liaison: Cindy Qualls (870) 307-7211

DRIVING DIRECTIONS TO LYON COLLEGE

From Little Rock/Searcy:

Follow Highway 167 to Batesville through town and turn right on College Street (by Kroger's Supermarket). You will enter the campus on College Street and find parking in front of, or to the south of the Chapel.

From Hardy/Cave City:

Follow Highway 167 to Batesville, turn left onto College Street. You will enter the campus on College Street. You will enter the campus on College Street and find parking in front of, or to the south of the Chapel.

From the East (Newport):

Follow Highway 69 to Batesville, turn right onto South 22nd Street then turn right on College Street. You will enter the campus on College Street and find parking in front of, or to the south of the Chapel.

From the West (Mountain View/Heber Springs):

Follow Highway 25 to Batesville, turn left onto Highway 167 (at the stoplight), follow 167 through town, and then turn right on College Street (by Kroger's Supermarket). You will enter the campus on College Street and find parking in front of, or to the south of the Chapel.

Youth Advisory Delegates will congregate in the Small Chapel located on the north side of Brown Chapel. Overnight lodging will be at the First Presbyterian Church.

Young Adult Advisory Delegates will also congregate in the Small Chapel.

Reception: You are cordially invited to attend a reception following worship on Friday night in the Bevens Music Room on the south side of Brown Chapel.

Parking: Two parking lots are located close to Brown Chapel (see campus map). One lot is in front of Brown Chapel, and the other is on the west side of the Derby Science Center. Handicap accessible spaces are located directly in front of Brown Chapel. The Brown Chapel parking lot is accessible from both College Avenue and Highland Road, and the Derby Science Center lot is accessible from College Avenue. Some slots will be reserved in both parking lots. We will also have some slots reserved on the west side of Edwards Commons (see campus map).

Lyon College Scot Shop: For your convenience, the Scot Shop will be open on Friday from 8:30 a.m. to 5 p.m. and Saturday from 11 a.m. to 2 p.m. The Scot Shop is located in Edwards Commons.

Lyon College Campus Tours: If you would like to have a tour of the campus, please contact Scarlett Barnes at (870) 307-7364 or scarlett.barnes@lyon.edu in advance of the meeting.

Internet Access: Brown Chapel has wireless Internet access. Please sign on as "Lyon Internet" with Password: honorcode2015.

Display Tables: Display tables for various organizations will be located in the Bevens Music Room in Brown Chapel. It is located down the sidewalk on the south side of Brown Chapel. Additional information will be given at registration. Displays must be removed by noon on Saturday.

Copier Service: If you need to make copies, call Cindy Qualls in the Advancement Office at (870) 307-7211.

Lost and Found: A box for lost-and-found items will be located in the Bevens Music Room at the registration tables.

Care and Concerns Board: A care and concerns board will be located in the Bevens Music Room near the entrance.

Miscellaneous: A Wal-Mart Supercenter, open 24 hours a day, is located at 3150 Harrison Street.

BATESVILLE LODGING

Comfort Suites

www.comfortsuites.com

1227 N. Saint Louis Street

(870) 698-1900

Holiday Inn Express Hotel & Suites*

www.hiexpress.com

1130 White Drive

(870) 698-2700

Super 8 Batesville

www.super8.com

1287 N. Saint Louis Street

(870) 793-5888

EconoLodge Batesville

www.choicehotels.com

773 Batesville Boulevard

(870) 698-1855

Ramada*

www.ramada.com

1325 N. Saint Louis Street

(870) 698-1800

*Please ask for “corporate rate” and mention “Lyon College” for a discount.

PRESBYTERY MEETING DINING

Patterson Dining Hall, located in Edwards Commons, will be open as follows:

Friday, February 9: 5-6:30 p.m. Dinner, \$6, pay cashier

Saturday, February 10: 12 noon-1 p.m. Lunch, \$6, pay cashier

Additionally, Batesville has many restaurants located along St. Louis Street (Highway 167) and Harrison Street (Highway 69).

CHILD-CARE REGISTRATION FORM
PRESBYTERY OF ARKANSAS MEETING, February 9-10, 2018
Please respond by Friday, February 2

1. By faxing form to (870) 793-1106
2. By sending copy via e-mail to firstpresbatesville@gmail.com
3. By mailing form to: First Presbyterian Church, 775 East Boswell Street, Batesville, AR 72501

CHILD-CARE REGISTRATION FORM – February 9-10, 2018
Child-care will be provided at First Presbyterian Church, 775 Boswell Street

Parent's Name(s): _____

Cell Phone Number(s): _____

Church: _____

Child's Name: _____ Age: _____

Child's Name: _____ Age: _____

Child's Name: _____ Age: _____

Child's Name: _____ Age: _____

Indicate which session(s) you will need:

Friday, 1:00 – 5 p.m. (Pre-Presbytery Workshop with Rev. Michael Vinson)

Friday, 6:30 – 9:30 p.m.*

Saturday, 8 a.m. – 3:00 p.m.*

The church cannot be responsible for providing meals for the children in child care. Parents are invited to either pick their children up and take them with them for dinner on Friday/lunch on Saturday or to prepare packed meals for any occasions they will remain at the church. Because we do not know individual children's preference for snacks, parents are also encouraged to send appropriate snacks.

*until end of the session



- 1 Welcome Center
- 2 Nichols Administration
- 3 Morrow Academic Center
- 4 Athletic Administration
- 5 Spragins House
- 6 Love Hall
- 7 Bryan Hall
- 8 Blandford Hall
- 9 Spragins Hall
- 10 Brown Apartments
- 11 Barton Apartments
- 12 Wilson & Rogers Hall
- 13 McRae Hall
- 14 Wilson Hall
- 15 Hoke-McCain Hall
- 16 Whiteside Hall
- 17 Bradley Manor
- 18 Campus Ministry House
- 19 Brown Fine Arts Building
- 20 LEAP Office
- 21 Derby Center
- 22 Alphin Building
- 23 Lyon Building
- 24 Mabee-Simpson Library
- 25 Becknell Gymnasium
- 26 Holloway Theatre
- 27 Edwards Commons
- 28 Scottish Heritage/The Temp
- 29 Kelley Baseball Complex
- 30 Hatcher Wrestling Center
- 31 Football Complex

- VISITOR/COMMUTER PARKING
- RESIDENT STUDENT PARKING
- FACULTY/STAFF PARKING
- AUTOMATIC EXTERNAL DEFIBRILLATOR

General info: 870.307.7000
 Campus Safety: 870.307.7233
 Emergency: 911
 Admissions: 1.800.432.2542
admissions@lyon.edu
lyon.edu/maps



North

Welcome Center

- Admissions
- Enrollment Services
- Financial Aid

Alphin Humanities Building

- Alphin Board Room
- Art Department
- English Department
- Foreign Language Department
- Art Studios
- Kresge Art Gallery

Athletic Administration Building

- Office of the Director of Athletics
- Women's Soccer Office
- Sports Information Office

Becknell Gymnasium

- Athletic Training Room
- Cheerleading Locker Room
- Fitness Center
- Basketball Locker Rooms and Offices
- Men's Soccer Office
- Volleyball Locker Room and Offices
- Men's and Women's Golf Offices

Brown Fine Arts Building

- Auditorium
- Bevens Music Room
- Music Department
- Chapel

Derby Center for Science & Mathematics

- Anthropology Department
- Biology Department
- Chemistry Department
- Mathematics Department
- Psychology Department

Edwards Commons

- Career Development Center
- Chaplain's Office
- Counseling Center
- Cardio Room
- Dean of Students
- Game Room
- Lyon Gallery
- Lyon Den
- Maxfield Room
- Patterson Dining Hall
- President's Dining Room
- ScotShop
- Student Government Association Office
- Student Life Offices
- Student Mailboxes
- Sodexo Dining Services Office
- Walker Room
- Young Gallery

Lyon Business & Economics Building

- Academic Services
- APPLE Project
- Business Department
- Economics Department
- Citizen's Bank Room
- Education Department
- Entergy Computer Center
- Flanders Reading Room
- History Department
- International Studies Advisor
- Nichols International Studies Program
- Nucor Auditorium
- Office of the Provost
- Political Science Department
- Religion and Philosophy Department
- Title III Office
- Worthen Bank Room

Mabee-Simpson Library

- Campus Safety
- Commuter Student Lounge
- Information Services
- Mail room
- Tornado Cross Garden
- Print Shop
- Regional Studies Center
- Upward Bound Math & Science Office

Morrow Academic Center

- Academic Support
- Supplemental Instruction
- The Salty Dog Coffee Shop

Nichols Administration Building

- Office of the President
- Advancement
- Alumni Relations
- Business and Finance Office
- Cashier
- Human Resources
- Marketing and Communications
- Registrar

The Temp

- Scottish Heritage
- Student Art Studios

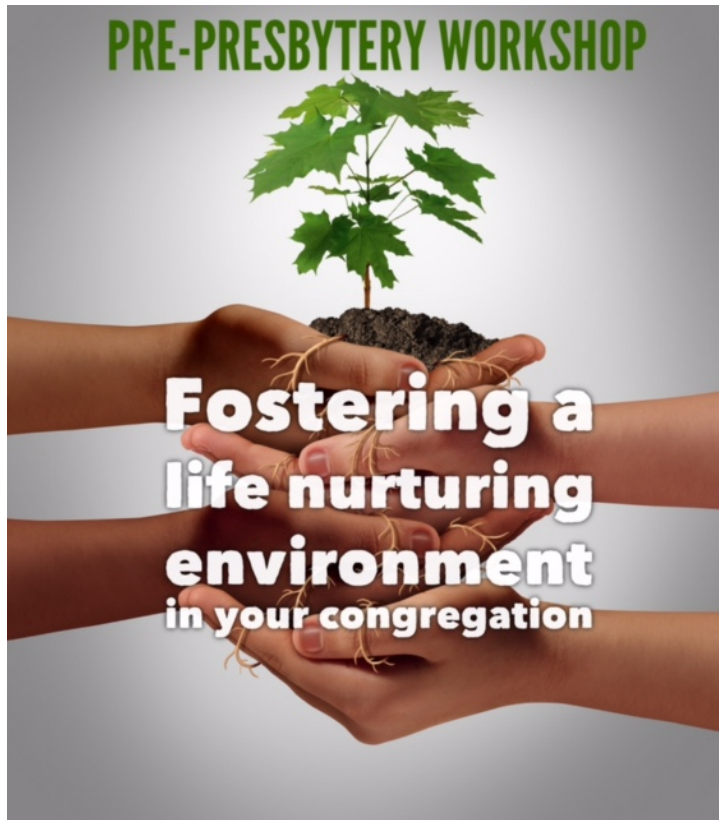
Gilliam Athletic Complex

- Kelley Baseball Complex
- Hatcher Wrestling Center
- Football Complex
- Men's and Women's Cross Country Office
- Scots Field at Independence Park



General Information: (870) 307-7000 | Campus Safety: (870) 307-7233 | Emergency: 911





**THRIVING IN CHANGE:
SHIFTING BEHAVIORS
SUCCESSFULLY
IN ORDER TO
ACCOMPLISH GOD'S
PURPOSE
IN OUR CHURCHES AND
IN OUR PRESBYTERY**

REV. MICHAEL VINSON

Tradition and habitual pattern are cornerstones of faith. Much of what we rely on in times of change and challenge are the core

teachings and rituals that bring us together in our faith communities.

So, it is a great paradox that old habitual patterns are also one of the greatest sources of frustration in churches who are striving to remain relevant and thrive in these rapidly changing times.

As creatures of habit, even when we know we want something new and different we fall back on behaviors and actions that we've always done. While some of these behaviors and actions are supportive and life nurturing, others are not. Our habits and patterns are often what get in the way of achieving the vision we desire.

During times of change, as churches, we need to be intentional about building structures within our local congregation and our Presbytery that support our capacity to be the people God is calling us to be. In this workshop, we will be focusing on shifting from old patterns of behavior and developing new patterns that will help increase the life-nurturing culture within our churches and support us in achieving our mission.

In previous workshops, we have learned how to foster life-nurturing environments, about mapping congregational transformation, and aligning with our purpose. In this final workshop of the series, we are going to learn about shifting from old patterns of behavior and developing new patterns of behavior.

In this workshop, you will learn to:

- use tools to help you identify patterns of behavior that help you achieve your purpose, and patterns of behavior that distract you from achieving your purpose;
- build structures within your church that support your purpose, and exhibit actions and behaviors that reflect who you are as a congregation, and who we are as a Presbytery;
- discern what needs to be developed, increased or eliminated to assure your purpose is best reflected in the way you do ministry in the world;
- work with the role of values, assumptions, and structures in helping you to be the church God is calling us to be in this time and place; and
- discern what behaviors within your congregation are empowering you to be faithful in accomplishing your purpose and which behaviors are distracting you from accomplishing your purpose.

You can use these tools to help you discern which programs within your church are moving it forward in mission and which programs are holding it back

This workshop is open to everyone at all levels of the presbytery including local congregations, whether you have attended the previous workshops in the series or not. You will be provided with tools that you can take away and immediately begin to use within your congregation to move from old patterns of behavior to new patterns of behavior that help you achieve the purpose God is calling you to achieve.

Where: Maxfield Room of Edwards Commons at Lyon College;

When: 1-5 pm on Friday, Feb. 9;

Register at: <https://shifting-behaviors-workshop.eventbrite.com>